

SCITUATE SOUTH SCITUATE NORWELL

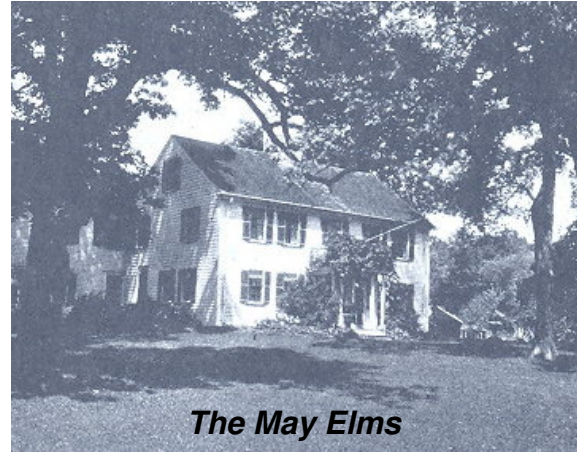


Town Offices

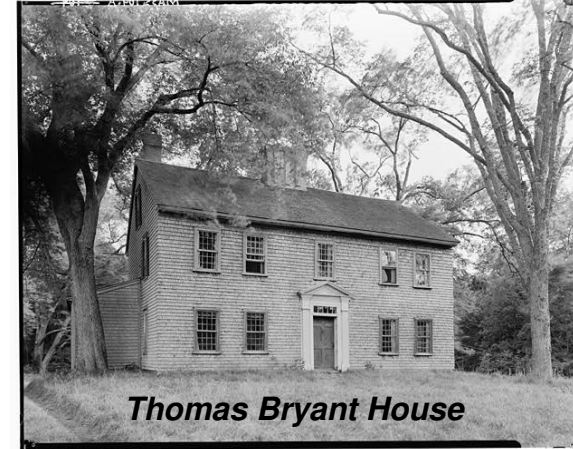
# Historic Norwell



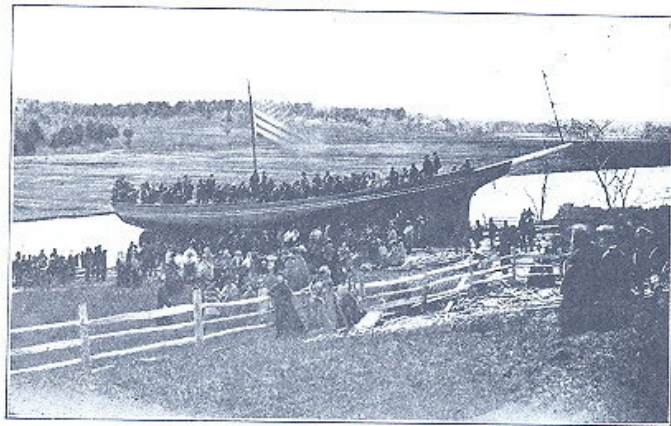
**CUSHING MEMORIAL TOWN HALL**  
 Gift to the town of Miss Florence M. Cushing, in memory of her father, Hayward Peirce Cushing, and her uncle, Nathan Cushing. Dedicated Nov. 7, 1936  
 (Photograph by Ralph H. Coleman)



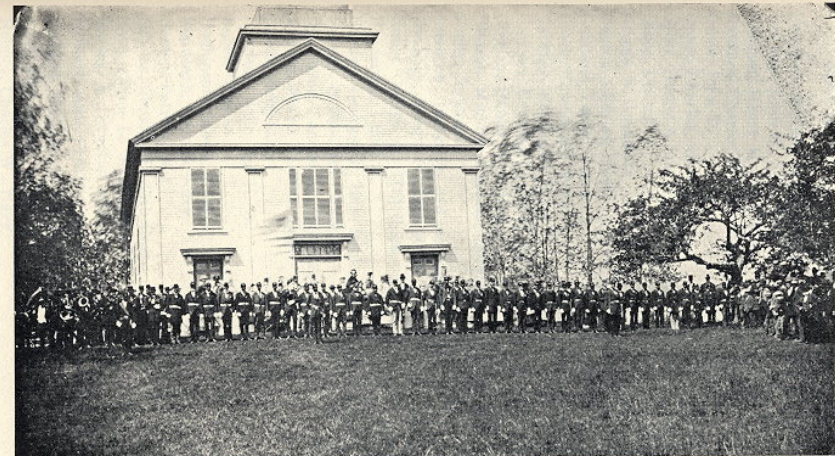
**The May Elms**



**Thomas Bryant House**



**LAST OF SOUTH SCITUATE SHIPS**  
 Schooner Helen M. Foster, ready to slide into the North River at Chittenden Landing, June, 1871.  
 (Cut loaned by Chief Justice Cushing Chapter D. A. R.)



**MEMORIAL DAY, ASSINIPPI, ABOUT 1878**  
 Reproduced from original plate. South Scituate and Hanover G. A. R. Posts. Note blurred outline of flag to left of center door, and of trees. The old camera was excellent, but the plate was slow.  
 (Photo by James H. Williams)

# *The Natural Beauty of Norwell*

